

OPENING NEW
METROLOGY

HORIZONS



Powered By Performance
www.OpenDMIS.com

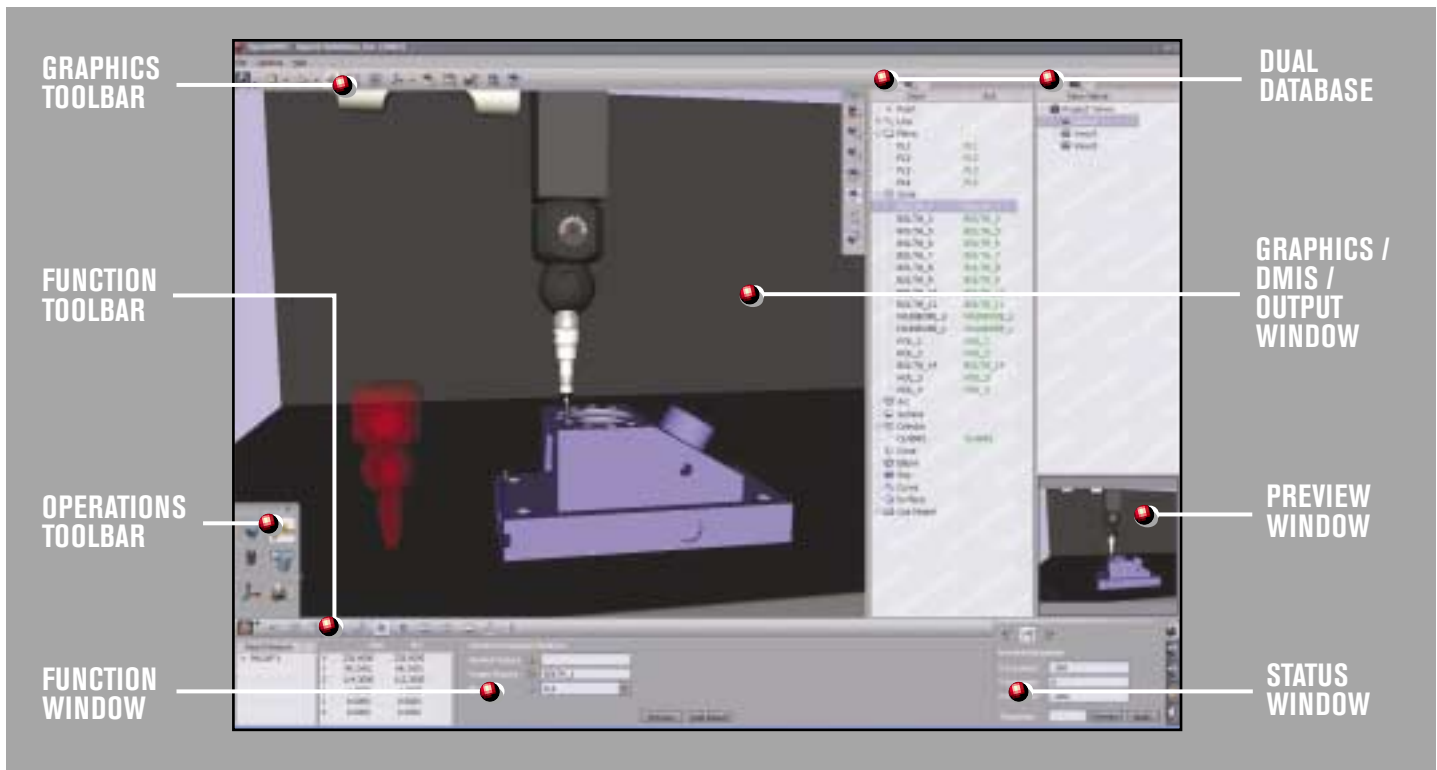
FUNCTIONALLY ENHANCED METROLOGY SOFTWARE ALLOWING OPEN ACCESS TO CMM-CAD PERFORMANCE

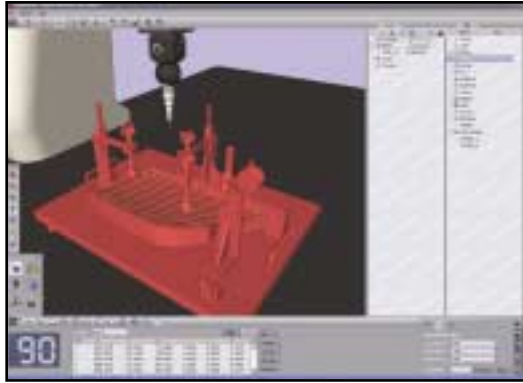
NEXT GENERATION USER INTERFACE

User Interface

A truly unique user interface; no pop-up windows, dynamic function sensitive tool bars, action icons and context sensitive work areas characterize OpenDMIS™. The graphics view port remains freely visible at all times maximizing operating efficiency. No windows to close, no cascading windows, no screen crowding and absolutely no annoying drill-down functionality. This next generation metrology software embraces the user minimizing learning curves and aids speed of use. CMM software for the first time is intuitive, powerful and efficient to use. OpenDMIS™ is heralded as long on capabilities while short on training.

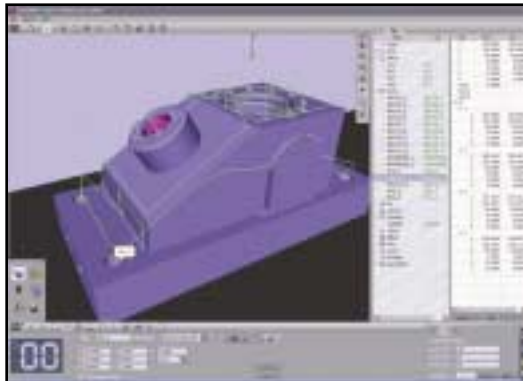
No OpenDMIS™ function is more than one mouse click away; no other CMM software can lay claim to a One Click Performance.





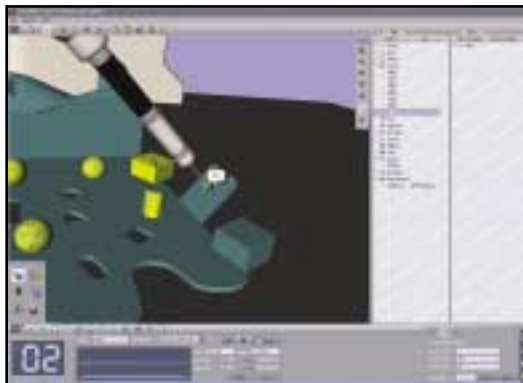
CAD Capability

- 3D CAD Import - IGES, STEP, DXF
- Solid Model Part and Fixture Representation
- Bi-Directional Transfer of Data
- IGES Export of Measured Data
- DMIS 4.0 Import and Export
- CAD Model Mirroring
- Multiple Model Import
- Geometry Recognition
- CAD Model Layering and Coloring
- World Coordinate Translation



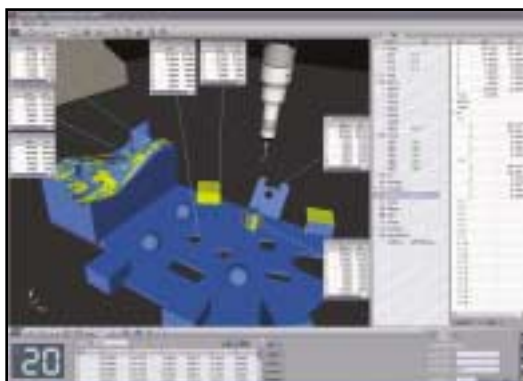
Virtual Programming

- Inspection Program Creation from CAD Model
- Simulation, Verification and Optimization
- Part and Tooling Visualization
- On-Line and Off-Line Application
- Auto Switching Between Modes On-Line
- CMM and Probe Simulation
- Renishaw Graphics Probe Library
- Motion Path Simulation
- Crash Prediction and Avoidance
- DMIS 4.0



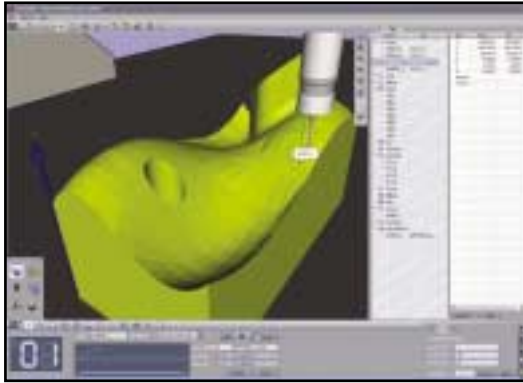
Intellectual Inspection

- Object Based Programming
- Auto Feature Sensor Alignment
- DMIS Navigator™
- Collision Avoidance
- Click 2 Measure™
- Move-To Simulation
- Quick Measure™



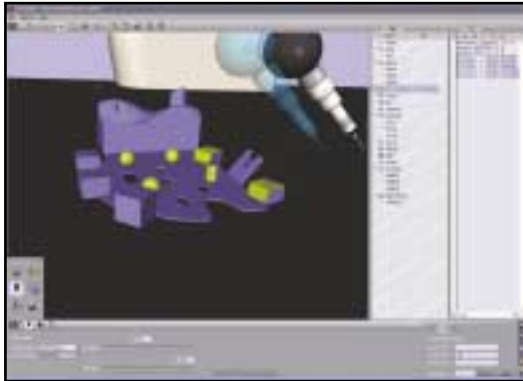
Reporting

- Toggled Output Windows
- Traditional Reporting
- Picture Reports
- CAD Model Display
- Full Customization
- HTML, Xcel, SPC Formats
- Dynamic Reporting
- Whisker Charts
- Data Management Tools



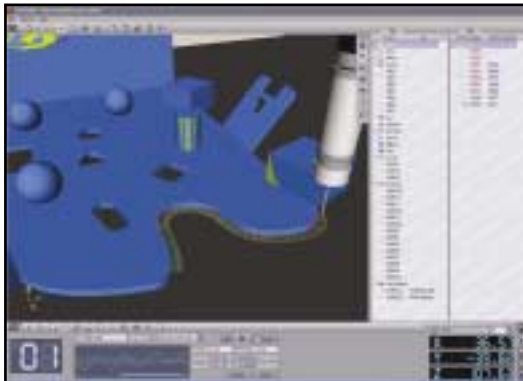
Relative Measurement

- Thin Wall Components
- Material Thickness Compensation
- Vector Build Macros
- Mirror Imaging
- Feature Pattern Analysis
- Hemmed Edges, Edge Points, Rail Checks
- Feature Pattern Analysis
- Automatic Routines



Automatic Routines

- Probe Calibrations
- Scan Features
- Picked Nominal Feature Inspection
- Scanning
- Feature Relative Measurement
- Grid Points
- Click & Measure
- Program Generation
- Object Selection from CAD



Scanning

- TP-Scan™ Touch Probe Scanning
- Data Export in IGES B-spline
- CAD Nominal Definition
- ASCII Data Input
- Nominal Curve Scanning
- Profile Analysis with Tolerancing
- Whisker Charts

TPScan

Object Based Programming

CMM programming has remained expert labor intensive and prone to error despite all the software advancements of past years while the utilization of CAD data has made more complex the programming task.

OpenDMIS pioneers Object Based Programming.

Drag and dropping features from the database area into the adjacent programming window automatically generates the underlying DMIS code together with probe and alignment definitions. Complex CMM programs can be created in a few minutes and simulated utilizing the powerful simulation and collision avoidance tools standard in OpenDMIS™.

Written by well respected industry Xperts OpenDMIS™ represents the dawn of a new era in CMM softwares and creates the new industry benchmark obsoleting all the DMIS software that have come before.

STANDARDS BASED & INDEPENDENT CAD-CMM SOFTWARE THAT'S TRULY ARCHITECTURE OPEN FOR METROLOGY PROFESSIONALS

In today's dynamic manufacturing society we are driven to conform to standards and specifications; now for the first time a CMM software has been developed that embraces and conforms to all of the existing and emerging international CMM standards and specifications.

A CMM software from a company independent of a CMM manufacturer that is truly open architecture and built upon standards.



Graphics Engine: Utilizes OpenCascade as its CAD engine
www.opencascade.com



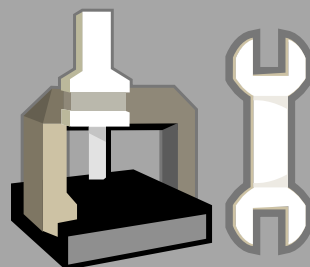
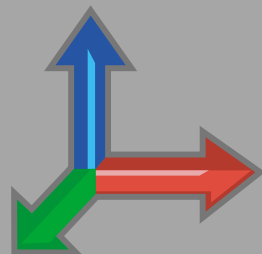
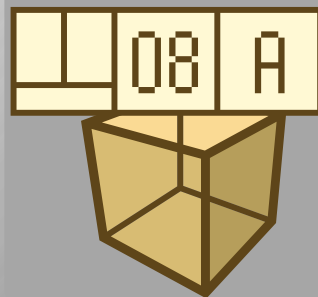
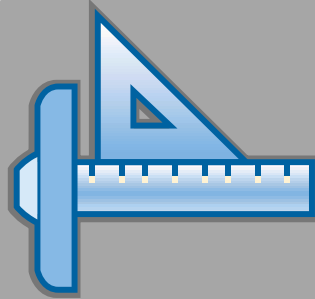
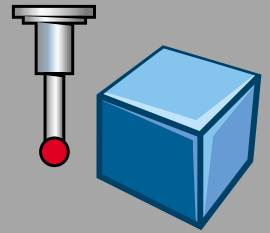
Software Driver: Utilizes the I++ neutral driver specification allowing plug and play on any controller that is I++ compatible



CAD Import: Allows import of STEP files the upcoming AP219 graphics exchange standard



Programming Language: Utilizes DMIS at a native level with no translation. ANSI & ISO standard





Powered By Performance

CMM Retrofits and Upgrades

The application of an OpenDMIS™ software upgrade can enhance your existing manual or DCC CMM performance at a fraction of the price of a new CMM. Xspect Solutions CMM Xspect Service partners have an unparalleled depth of experience in all CMM brands providing engineering integrity and assured customer confidence. Combined with the revolutionary open architecture Virtual Controller the 32bit SoftMotion™ solution has no proprietary components. Motion on a CD; a CMM industry first which combined with OpenDMIS™ provides a truly state of the art solution to your existing CMM structure.

The OpenDMIS™ error-map is OPEN, unlike most competitors who lock up and deny access to YOUR compensation data, thus ensuring you have a choice of CMM calibration supplier.

Xsperienced CMMs

Xspect Solutions offers an extensive inventory of pre-owned CMMs that have undergone a thorough inspection and rebuild program at the Xspect CMM remanufacturing center. All Xsperienced CMMs are offered with OpenDMIS™ ensuring your new CMM is a state of the art inspection tool and guaranteed at least a further 10 year life. An Xsperienced CMM typically represent a 50% saving over new.

New CMMs

OpenDMIS™ is available on a full range of new CMMs



Xspect
SOLUTIONS

866-4 Xspect (866 497-7328)
inquiries@XspectSolutions.com

Wenzel Building D-1
28287 Beck Road
Wixom, Michigan 48393

Phone: 248 596-1193
Fax: 596-1194

Distributed By:

www.OpenDMIS.com